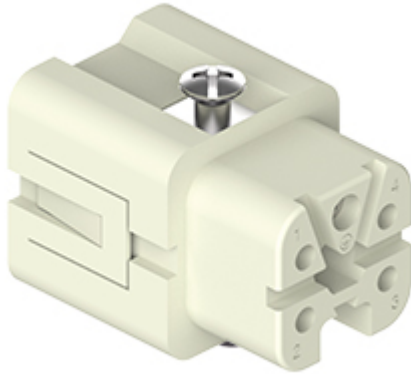



Part number

**CKSF 04**



Female insert, CKS series, spring terminal connection, 4 poles + PE, 10 A 400 V 4 kV 3, size "21.21"

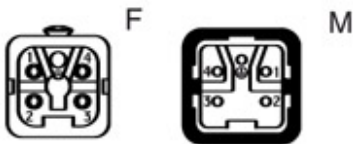
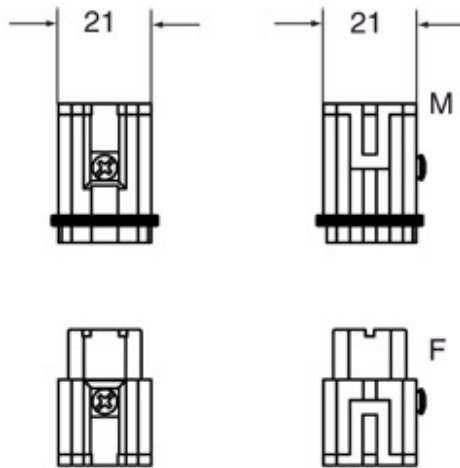
Product description	
<b>Product type</b>	Insert
<b>Series</b>	CKS
<b>Connection type</b>	Spring terminal connection
<b>Gender</b>	Female
<b>N. of poles</b>	4 poles + 
<b>Size</b>	Size "21.21"
Technical data	
<b>Current</b>	10 A
<b>Voltage</b>	400 V
<b>Rated impulse withstand voltage</b>	4 kV
<b>Pollution degree</b>	3
<b>Rated voltage according to UL/CSA</b>	600 V
<b>Wire cross-section</b>	0,14 mm <sup>2</sup> - 2,50 mm <sup>2</sup>
<b>AWG size</b>	26 - 14
<b>Contact type</b>	Turned silver plated
<b>IP degree of protection</b>	IP20 without enclosure, IP44/IP66/IP67/IP68/IP69 with enclosure
Further technical details	
<b>Characteristics according to EN 61984</b>	10A 400V 4kV 3; 10A 690V 4kV 2
<b>Mating cycles</b>	≥ 500
<b>Insulation resistance</b>	≥ 10 GΩ
<b>Contact resistance</b>	≤ 3 mΩ
<b>Weight</b>	16,00 g
<b>Operating temperature range (min, max)</b>	-40 °C ... +125 °C
<b>Conductors stripping length</b>	9...11 mm
<b>UL 94 flammability rating</b>	V-0
<b>Torque for main contact</b>	M2,5: 0.4 Nm; 3.5 lb.in (0,5 x 3mm )
<b>Tightening torque for PE connection</b>	M4: 1,2 Nm, 10,6 lb.in (Ph2 or 1,0x5,5mm )
<b>Tightening torque for fixing screws</b>	M3: 0,5 Nm; 4,4 lb.in (Ph1 or 0,8 x 5,5 mm)

Material properties	
<b>Main material</b>	Polycarbonate (PC)
<b>Other materials</b>	Contacts: copper alloy
<b>Colour</b>	RAL 7032 grey
<b>RoHs conformity</b>	Compliant with exemption 6(c): copper alloy containing up to 4% lead by weight
<b>China RoHs - EFUP</b>	50
<b>REACH SVHC substances</b>	Yes Lead
Approvals / Standards	
<b>Reference standard</b>	EN 61984:2009-06
<b>Certifications</b>	CSA, CQC, DNV-GL, BV, EAC
<b>UL</b>	ECBT2
<b>cUL</b>	ECBT8
General ordering information	
<b>EAN13 code</b>	8015747164405
<b>ETIM 7.0</b>	EC000438
Packaging Information	
<b>Packaging length</b>	210,00 mm
<b>Packaging height</b>	200,00 mm
<b>Packaging width</b>	130,00 mm
<b>Packaging weight</b>	3,00 kg
<b>Packaging volume</b>	5,46 dm <sup>3</sup>
<b>Packaging description</b>	Carton box
<b>Packaging quantity</b>	200 Pcs
<b>Packaging EAN code</b>	8015747164450
<b>Sub-packaging weight</b>	0,60 kg
<b>Sub-packaging description</b>	Carton tray
<b>Sub-packaging quantity</b>	40 Pcs
<b>Sub-packaging EAN barcode</b>	8015747164467

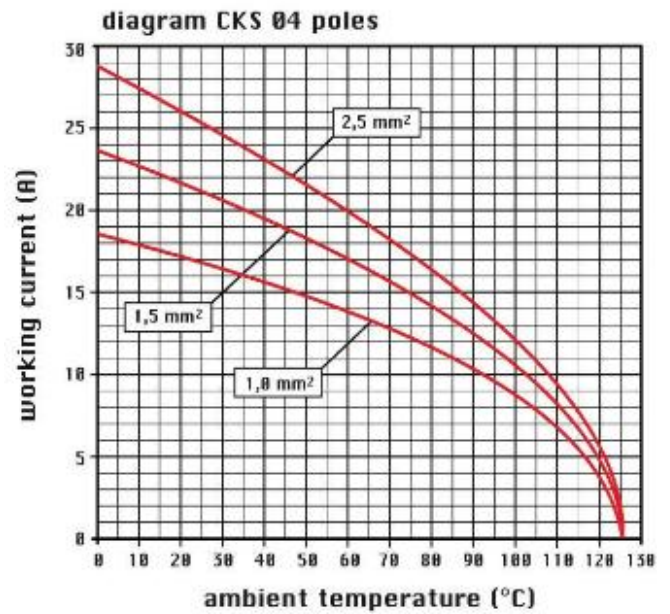
Part number  
**CKSF 04**



Catalogue drawings



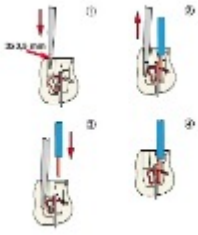
Catalogue drawings



**Notes**

Dimensions shown in mm are not binding and may be changed without notice.

Spring terminal connections



Rear top entry of wires for a more easier wiring.

---

### California Proposition 65 Information



### WARNING

This product can expose you to lead and its compounds, known to the State of California to cause cancer and/or reproductive toxicity. For more information go to [www.P65Warnings.ca.gov](http://www.P65Warnings.ca.gov).

---

### California Proposition 65 Information



### WARNING

This product can expose you to lead and its compounds, known to the State of California to cause cancer and/or reproductive toxicity. For more information go to [www.P65Warnings.ca.gov](http://www.P65Warnings.ca.gov).

---